



*welcome to*  
**The Gatehouse  
Lodge**

*the gatehouse way*

# *for your information*

---

**The name of your Holiday Cottage** : The Gatehouse Lodge

**WiFi**

WiFi Network : The Gatehouse Lodge

WiFi Code : gatehouselodge

**Contact Numbers**

Easton Estate Office : 01476 550 227

Easton Walled Gardens Office : 01476 530 063

**Contact email**

All hours : [email@theeastonestate.co.uk](mailto:email@theeastonestate.co.uk)



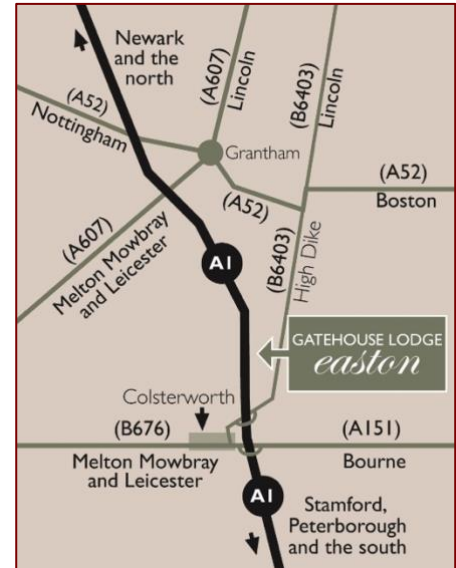
# arrival information

## DIRECTIONS BY CAR

If you are using GPS/SatNav, the postcode is NG33 5AP. However, it will probably try and bring you into the village from the A1. This is not possible, you need to come in off the B6403, as on the map.

Go down into the village and follow the signs to the Car Park, which is on the left hand side. Go on past the Car Park and turn left at the large memorial Cross. You will find marked car parking to the left, just before the metal gates. You will find the Gatehouse Lodge in front of you to the left of the arch.

You might also like to click this link for directions  
<https://www.eastonholidaycottages.co.uk/the-gatehouse-lodge/location>



## CAR PARKING

The Lodge has private parking for one vehicle (just before the double metal gates at the entrance). You are welcome to unload outside the lodge (unless there are a lot of visitors around), but we ask that at all other times you park your vehicle here. If you need parking for an additional vehicle, just let us know and we'll show you a convenient spot. We also have an Electric Vehicle Charging Point available free of charge. Please let us know if you need it, and we'll show you where it is. Many thanks.

## CHECK-IN TIME

The Gatehouse Lodge will be available to you from 3pm on the day arrival. The key is in a key safe so that you can collect it yourself.

The key unlocks both doors in the cottage and should be returned to the key safe when you leave. If you have any questions on arrival, please call 01476 550227 or email us at [email@theeastonestate.co.uk](mailto:email@theeastonestate.co.uk) and we'll do our best to answer them.

## KEYS

The key to the cottage is kept in a key safe by the door. The code will have been sent to you in your confirmation email.



# *departure information*

---

## **DEPARTURE**

Departure time is 11am. We can either come and get the key off you, or you can leave it in the key safe by the door. Please can you make sure that everything is switched off in the Cottage (especially the hob, the oven, the iron and hair dryer, etc.). It's ok to leave the TV, Fridge and lamps, etc on.

All dishes, glassware, cutlery, pots, pans and other kitchenware should be cleaned and put away. All linen and towels should be left in the bedroom or bathroom.

Fridges, freezer and cupboards to be cleared of food, etc.

All rubbish should be cleared, bins should be emptied and rubbish should be placed in the bins outside.

Could you please turn the thermostat down to 10°C?

Can you make sure the door is locked (it is not self-locking)?

Before you go, can you put your name and dates of stay in the Visitors' Book, which is in the Sitting Room? If you've got any good suggestions of things to do, or did something that you think would be nice for future guests to do as well, please feel free to write them down in the book.

You'll also find a comments form in the cottage. Please fill this in if you wish to and leave it for us to pick up. Any suggestions gratefully received

Thanks.

## **CLEANING**

You should find the house clean on arrival but please let us know if there are any problems. On departure it would be helpful if you could leave the house (particularly kitchen contents) clean and tidy, but there's no need for you to perform a full clean! After you depart our cleaners will perform that for the next guests.

If you need a cleaning service during your stay, please let us know and we will try to arrange this. There would be an extra payment for this.

*we hope you've had a wonderful stay  
and wish you a safe journey home.*



# *history and restoration*



The Gatehouse c1910

The Gatehouse Lodge was built as the Lodge to the entrance of Easton Hall, a grand Victorian country house demolished in 1951. Home to the Cholmeley Family since 1592, the Hall was requisitioned by the Army during World War II. It suffered considerable damage during occupation by the Parachute Regiment leading to it being deemed beyond repair after the war. The adjacent Gatehouse, dated 1841, is thought to have been designed by the architect, Anthony Salvin.

The remaining buildings on the site of the old Hall were listed Grade II in 1987 and spent several years on the highest level of the Heritage At Risk Register. Many of these buildings have been restored over the past 25 years and now form the core of Easton Walled Gardens.

The restoration of The Gatehouse Lodge was started in late 2015 and was finished at the end of March 2016, with our first guests arriving in April of that year.

The following photographs show the 'before and after' condition of the Lodge.



The Kitchen

# *history and restoration*

---



The Sitting Room



The Bedroom



The Bathroom



# *about the accommodation*

---

All instructions for appliances, etc can be found at the back of the information folder, but here are few tips.

**BATHROOM MIRROR** The mirror lights and de-mister are switched on and off using an infrared sensor found at the centre of the bottom of the frame. Simply wave your hand across the sensor to switch it on and off.

**BATHROOM TAPS** To run these, push the lever *inwards*

**DISHWASHER** Dishwasher tablets are provided under the kitchen sink. Please let us know should you run out.

**FRIDGE** The Fridge is under the stairs. Please can you make sure that it (and the freezer compartment) is empty before you leave? Thanks.

**HAIR DRYERS** A hair dryer is provided in the Cottage. Please make sure that it is unplugged when not in use.

**HEATING AND HOT WATER** This is set to be on for your stay. Please control it via the thermostat (one in the kitchen and one in the bedroom) rather than the controller. There is also a kick board heater under the sink cupboard in the kitchen. There is a boost button should you need extra hot water. The Bathroom has a separate heating system, which has a thermostat in the cupboard up there. Again, please leave the settings as they are, but feel free to turn the thermostat up if your feet are cold! If you remember, could you please turn the thermostat down to 10°C before you leave? Thanks

**IRON AND IRONING BOARD** An ironing board and an iron are in the cupboard off the Sitting Room. Please make sure that the iron is unplugged when not in use, and never leave it unattended.

**LAUNDRY** There is a washer/dryer in the Kitchen, to the right of the sink. There is some detergent in the Cottage for your use. Please let us know if you run out. Instructions are in the folder.

**MICROWAVE** The oven is a combination conventional/microwave oven. Please see the instructions for use. Remember not to put metal in it when using the microwave function!

**TEA AND COFFEE** There is a Nespresso coffee machine provided (the instructions are in the folder.), along with capsules. They are there for your use, so please help yourself. Tea bags are also provided. Please remember to empty the used capsules from the machine – they are fully compostable, so please put them in the compost bin under the sink.

**SAFE** There is a lockable safe in the bathroom cupboard. **Please make sure you leave the key in the lock when you leave.** Guests are advised that the management cannot be held responsible for the loss or damage in respect of jewellery and other valuables left in the Lodge or in the safe.

**SHAVER SOCKET** The shaver socket is on the right hand side of the mirror, with its own switch.

**SPRINKLER** The Kitchen is fitted with a sprinkler, which is heat (rather than smoke) activated. Should this go off accidentally, open the cupboard under the sink and press **STOP** on the black box.

**TELEVISION AND DVD** There is a wide range of freeview channels and radio channels available on your television. Press guide on your television remote for a full list of channels.

The DVD player is built-in and is to the side of the TV, at the rear.

Please leave the remote control on the table under the TV when you leave. This will save us hunting down the side of the armchair for it. Thanks.

**WI-FI** Complimentary, unlimited wireless broadband is available in the cottage. The network is named **The Gatehouse Lodge** and the password is **gatehouselodge** (lowercase and no gaps).

**WOODBURNER** Logs for this are provided free of charge. Please only use the logs provided (there are plenty under the archway beside the Lodge – use the ones on the left) and let us know if you run out. Please also make sure that the woodburner is left safe at night or when you're out.





# *enjoying your time here*

---

## **BOARD GAMES / PLAYING CARDS**

There's a selection of games in the Library, for those wet days

## **BOOKS**

Please feel free to read the books. If you do inadvertently take one away with you, we would be grateful if you would return it so that future guests can share your enjoyment of it.

## **BOSE MUSIC SPEAKER**

This is a bluetooth speaker, which should connect to your device if you select from your settings. Full instructions are at the back of the information folder.

## **CROQUET**

We have a croquet lawn at the bottom of the terraces in the Gardens. Have a game, but please leave the mallets and balls in the box provided when you've finished.

## **DVDs**

Films can be found in the Library and the player is built-in to the TV.

## **DOGS**

Please don't allow dogs to get onto the furniture nor to go upstairs. Hopefully you have brought their own bed. Please can you use the towel provided to dry them off after a walk, rather than the bath towels! Also, please can you keep them on a lead when in Easton Walled Gardens and make sure you clean up after them. Guests' Dogs are only allowed in Easton Walled Gardens before 10am or after 5pm.

## **EASTON PARK**

The Park surrounding Easton Walled Gardens is let to a separate tenant and is farmland, so I'm afraid that (except for the Public Footpath in the North Park) there is no access to it for guests.

## **LOGS**

There are plenty of logs at The Gatehouse Lodge, but if you need more there are plenty under the archway beside the Lodge – use the ones on the left.

## **MAPS, GUIDES, ETC**

Local maps and guides can be found in the folder.

## **NEWTON'S TRAIL**

A pretty illustrated map showing our area with attractions, churches to visit and places to eat and drink can be found in the folder.

## **POST CARDS**

The cards provided are for you to use at no charge. The nearest post box is just up the lane, before the S-bend.

## **PUBLIC FOOTPATHS**

There is a map showing Public Footpaths around Easton in the folder.

## **UMBRELLAS**

Please use the umbrellas provided, but make sure that you leave them behind so that the next guests don't get wet.





# *other useful information*

---

## **ASH**

If you need to remove the ash from the woodburner please put it in the bin outside the front door, which will be emptied regularly for you.

## **BREAKAGES**

Should you break anything during your stay, please could you let us know as soon as possible, or leave a note when you leave, so that we can replace it for the next guests. We do reserve the right to charge for breakages.

## **DRAINAGE**

We are on a septic tank in the Gardens, so please don't put anything you shouldn't down the loo.

## **RECYCLING AND RUBBISH**

There are bins for rubbish, recycling, compost and ash outside the front door, which will be emptied regularly for you. If possible, put your rubbish out in the mornings rather than last thing at night. All the usual recyclables (ie marked as such) are currently taken. Please make sure it is all clean, though. Thanks.

## **COMPOST BIN**

Please put all vegetable waste in the green bin under the sink, or, if there's a lot, in the bin outside. We'll put it on the vegetable patch, and it will then be used to grow next year's veg.

## **OFFICE OPENING HOURS**

The Estate Office (your first port of call if you need anything) is open Monday to Friday 8.30 am to 5 pm  
**01476 530 063**

## **QUESTIONS**

If you require more information on the facilities available please contact the Estate Office **01476 550227**, or email us on [email@theeastonestate.co.uk](mailto:email@theeastonestate.co.uk)

## **SECURITY**

Please lock your car and make sure any belongings left in your car are out of sight. Please note that the Cottage doors are NOT self-locking, you will need to lock them when you leave.



# *where 's the nearest?*

---

## **FARM SHOP**

Jade's Farm Shop in Burton-le-Coggles, a ten minute drive away, is attached to the Cholmeley Arms, (the Estate owned, award winning pub) and has fabulous meat along with day-to-day essentials such as milk and veg, coffee and ketchup, etc. Please check with them for opening times on 01476 552 476.

## **SHOPS AND SUPERMARKETS**

The nearest local shop is the Co-operative (2.5 miles) at Bridge End, Colsterworth NG33 5NZ

Grantham has various Supermarkets, the closest being Sainsbury's (7.5 miles) London Road, Grantham, NG31 6HJ

There is a Waitrose in Stamford (16 miles) West Street Stamford PE9 2PR. Stamford also has a good range of general shops.

## **PETROL**

Our nearest petrol station is on the South bound A1 at Colsterworth.

## **TRAIN**

Grantham Station (7.5 miles) has direct links with London King's Cross. Station Road, Grantham, NG31 6BT

# *our local guide*

---

## **WELCOME TO OUR LOCAL AREA**

We hope you find this guide useful and that we inspire you to make the most of your stay with us.



Our area of Lincolnshire is called South Kesteven which is a Viking word and many of the woods and settlements around us still have Norse names. Traditionally the landscape was part of the great hunting country that includes Rutland and Leicestershire. The rolling hillsides and wooded valleys are often a surprise to many visitors who may think that all of Lincolnshire is flat like the Fenland to the East. The countryside and villages looks like the Cotswolds because the same local limestone is the main building material.

Transport links are excellent and you can reach the Estate and cottages by car (usually via the A1) or train (1 hour 10 mins on the East Coast mainline) to Grantham. To explore our area, you will need a car (or a bike if you are really fit) as buses are a rare sighting.

## **THE EASTON ESTATE**

All of our cottages are part of the Easton Estate, owned by the Cholmeley family for over 400 years. Whether you are staying in the School House at Burton-le-Coggles or the apartments or cottages at Easton you will find that Easton Walled Gardens, The Cholmeley Arms (pub), Jade's Farm Shop and the Grade 1 listed church are all part of the estate. (Please note the Estate covers both villages which are about 3 miles apart so you will need to walk or drive to one or the other.) There is a quiet road between the villages for walking or cycling. The nearby village of Corby Glen has a couple of shops, pubs and a delicatessen.

## **LINCOLNSHIRE**

We are in South West Lincolnshire, which is in east central England. Lincolnshire borders eight other counties including Northamptonshire in the south for just 20 yards, England's shortest county boundary. The county town is Lincoln, roughly in the middle of the county.

## **RUTLAND**

Just across the border, Rutland is the smallest historic county in England. Its greatest length north to south is only 18 miles and its greatest breadth east to west is 17 miles. The only towns in Rutland are Oakham, the county town, and Uppingham. At the centre of the county is the large artificial reservoir, Rutland Water, which is an important nature reserve serving as an overwintering site for wildfowl and a breeding site for ospreys.



# *our local guide*

---

## **EVENTS AND FESTIVALS**



From February to December there are festivals and events on in the rural towns and country houses of South West Lincolnshire (also called South Kesteven.) From Snowdrops in the Spring to Science festivals in the autumn, a trip to South Kesteven is full of surprises. Here are some of our favourites:

### **SPRING**

In February, the snowdrop brings the joy of spring across churchyards, villages and parks. For a full on experience you can visit Easton Walled Gardens to see great drifts of snowdrops and indulge in Galanthomania.

March and April are filled with a plethora of events as the area welcomes spring. Traditional events include an international music festival and the mid-Lent fair in the beautiful, ancient stone-built town of Stamford. Meanwhile, in the picturesque Deepings, a fairly new literary festival is worth looking up.



May is welcomed in with the hugely popular Denton Street Market on May Day where you can experience a genuinely local event. For more genuine authenticity, you can be part of the Bourne Festival in June which celebrates live music of all genres for families and lovers of real ales and ciders.





# *our local guide*

## **SUMMER**

The end of June kicks off the Sweet Pea Season at Easton Walled Gardens, attracting thousands of visitors to take in the scent and sight of hundreds of sweet peas in full bloom. John Clare, the great rural poet, is celebrated in mid-July at the John Clare Festival in Helpston and the month finishes with popular Burghley Film Festival.

In July, the action also moves south to Rutland Water for Birdfair. A huge event that has been described as 'The birder's Glastonbury' - birdwatching at Rutland Water is worthwhile all through the year and this event celebrates the reservoir's success. Burghley House hosts the second of its two food fairs in August and, if you miss this event there is plenty of food available at Burghley Horse Trials in September.



## **AUTUMN**



October features the most important event in the Corby Glen calendar: The Corby Glen Sheep Fair. A mere 780 years young, there is still a sheep auction here every year and two days of fun for locals and visitors alike. The sheep show makes everyone laugh and there are stalls, clay pigeon shooting and fairground rides for all ages.

## **WINTER**

For Christmas activities, look out for the events staged at big country houses throughout the region. Try the websites for Belvoir Castle, Rockingham Castle, Doddington Hall, Belton House and Burghley House for Christmas highlights, candlelit tours and more dressing up! Burghley House also hosts food fairs where you can sample some of the best food from around Lincolnshire, an area already famous for its food production.



Putting this guide together it is hard to believe so much goes on in such an undiscovered part of the country. We have spent years enjoying it and we hope that your visit is the first of many!

# *our local guide*

---

## **WORKSHOPS AND COURSES**

### **MANOR FARM COOKERY SCHOOL, BRANSTON**



Based in the Vale of Belvoir and less than half an hour from the Easton Estate, this excellent cookery school run by Diana Thompson offers tailored courses and regular themed cookery days throughout the year. We have really enjoyed doing the one day Japanese Sushi course and learnt a lot!

### **FISHING AND SAILING AT RUTLAND WATER**

20 minutes drive from the Estate, this beautiful reservoir boasts trout, big pike and zander that attract anglers from around the country. Learn to fish with Rutland Fly Fishing Adventures, who offer everything from one-to-one tuition to full day fly fishing courses.

If you are new to the water you can learn to handle a boat or experienced sailors can hire boats from the Rutland Sailing School.





# *our local guide*

## **ART AND ANTIQUES**



### **ANTIQUES**

Easton is just 25 minutes from Newark with its internationally known Antiques fairs. As well as the large seasonal events which attract buyers and sellers from Europe and Asia, did you know that the showground also hosts a monthly event locally known as 'Runway Monday'? This is somewhere between a car boot sale and an antiques fair and offers all sorts of bargains and interesting pieces from a bygone era. IACF run both fairs and you can see more information on their website. The best time to buy is between 8.00 and 10.00 am and it will leave you with the rest of the day to explore Newark. There are more antique shops, good places to eat and an imposing castle destroyed by Cromwell and his men.



There are also plenty of antique shops in towns like Stamford, Horncastle and Uppingham, so we are perfectly placed for many happy days exploring.

### **ART AND SCULPTURE**

Great works of art, furniture, paintings and ceramics can be seen at Grimsthorpe Castle, Belvoir Castle and Burghley House, but if you are keen to search out smaller galleries the Willoughby Memorial Trust Gallery in Corby Glen hosts regular exhibitions. Check the opening times on their website or Facebook pages. If you love sculpture, the Sculpture garden at Burghley House and the annual summer exhibition at Doddington Hall near Lincoln are definitely worth investigating.



# *our local guide*

---

## **EATING**



Here is our guide to a few of our favourite places to find delicious food in the area.

### **THE CHOLMELEY ARMS, BURTON-LE-COGGLES**

The Cholmeley Arms is a gorgeous Country Pub set in an acre of grounds in the centre of the pretty Conservation Area Village of Burton-le-Coggles. The Cholmeley Arms is on the Easton Estate and is run by Adam Green. Booking is essential, especially at weekends. Visit their website for more information. The Cholmeley Arms is also home to Jade's Farm Shop. Burton-le-Coggles, NG33 4JS. Pub: 01476 550225 Shop: 01476 552 476



### **THE OLIVE BRANCH, CLIPSHAM**

A few miles down the A1, The Olive Branch is lovely pub in a sleepy Rutland village. It dates to the 17th century and is built of Clipsham stone. Inside, a warm, informal, rustic chic hits the spot perfectly with open fires, old beams, stone walls and choir stalls in the bar. The Pub was voted Good Pub Guide County Dining Pub of the Year 2021. Main St, Clipsham, Oakham LE15 7SH Tel: 01780 410 355

### **CECIL STREET FISH BAR, GRANTHAM**

Best fish and chips in Grantham. Voted by our office team to be the best, freshest fish and chips in Grantham you can get to this takeaway easily by going into Grantham via the B6403 (known locally as 'The High Dike').

57 Cecil Street, Grantham, NG31 9AQ. Tel: 01476 570169



# *our local guide*

---

## **HAMBLETON HALL, OVERLOOKING RUTLAND WATER**

For a serious celebration and Michelin starred cuisine, book dinner at Hambleton Hall. In the summer the views from the terrace are so beautiful that it's easy to believe you are in the south of France and Audrey Hepburn is on the next table. At quieter times of the year they may have a 'lunch for less' offer that makes it good value to eat exquisitely prepared food. Hambleton, LE15 8TH. Tel: 01572 756 991

## **THE MAD TURK, STAMFORD**

For traditional rustic Turkish Cypriot, food this restaurant is a firm favourite with the locals including us. As it is in beautiful Stamford, it is set in an old stone building with low windows that Samuel Pepys would have recognised. St Paul's Street, Stamford, PE9 2BE. Tel: 01780 238001

## **THE COSY CLUB, STAMFORD**

For lunch. For a lively vibe and an excellent mix of tapas style and traditional lunch choices we like to eat here or to get a hot chocolate. It has masses of capacity but it is a big old barn of a place so it isn't the place for quiet meals for two although the staff are sweet.

The Old Delivery Office, Horseshoe Lane, Stamford, PE9 2RB. Tel: 01780 767710

## **THE BULL AND SWAN, STAMFORD**

Once an aristocratic drinking den, this ancient building has a great restaurant with locally sourced food and a cosy atmosphere. A great place to escape to and feel looked after and well fed.

24 High Street St Martin's,  
Stamford PE9 2LJ  
Tel: 01780 766 412

# *our local guide*

---

## **GARDENS AND WILDLIFE**



## **GARDENS**

### **EASTON WALLED GARDENS**

Easton Walled Gardens is the obvious starting point for your visit to us. With 12 acres of gardens to explore and friendly gardeners, an out of hours walk around the gardens is what makes staying with us so special. See the Gardens' website for more information, or have a look at the Gallery.



### **BARNSDALE GARDENS**

Many of our guests like to visit Geoff Hamilton's garden in Rutland. For many years it was the home of the BBC programme Gardener's World and has 38 different gardens to explore. They are full of inspiration for small and medium sized gardens and there is a nursery and tearoom attached.

### **BURGHLEY HOUSE GARDENS**

Bursting with life, Burghley Gardens feature imaginative planting, sculpture and surprises sure to delight. Two spectacular gardens, each with their own distinct atmosphere and beauty.

Discover horticulture, sculpture and sensational seasonal colour as you stroll through the undulating landscape of our Sculpture Garden, Capability Brown's lost gardens.

Then step into a world of classical civilisation, astrology and astronomy in the highly entertaining Garden of Surprises. A sensory delight with the unexpected at every turn.

# our local guide



**SNOWDROP SEASON** Easton Walled Gardens is known nationally for its snowdrops and, if you visit in February or Early March, this is the time to see them at their best. Nearby Little Ponton Hall opens its lovely gardens for a weekend in February.

## **NURSERIES**

There are two romantic nurseries near us. Tim Rasell's Nursery, named, not surprisingly, **Rasell's Nurseries** in nearby Little Bytham is run by Tim and his family. Beautifully maintained with stunning pot displays in the summer, it is a good place to search out excellent garden plants. **Thistleton Herb Nursery** is also family run and if you love herbs and pelargoniums (and who doesn't) this is a magical place where all the stock is propagated

in-house (which is extremely rare nowadays) and we never need an excuse to drop in when we pass the little sign on the main street in Thistleton.

## **WILDLIFE**

With its gently rolling countryside and wooded lanes, wildlife sightings (even from the car) are a big part of what makes the Easton Estate and the surrounding villages, so interesting. Red Kites have established a stronghold here and other raptors include buzzards, kestrels, sparrowhawks and hobbies. Occasionally, you might spot a raven, an osprey, a peregrine falcon or a goshawk.



Hares are another big feature of our local landscape

and Muntjac, Roe and Fallow Deer can be seen in the headlights at dusk as we return from The Cholmeley Arms. If you are interested in visiting nature reserves, we are at the heart of a band of limestone soil. Many of our best native wildflowers thrive on this soil and nowhere else and they bring with them bees and butterflies in abundance at the right time of year.

## **BARNACK HILLS AND HOLLOWES**

The remnants of Roman works, the amazing flora here includes Pasqueflowers and Man Orchids. The nature reserve is a stronghold of the marbled white butterfly and is beautifully laid out for visitors. There is a thirty minute walk around the reserve. The reserve is just south of Stamford so makes a good detour before heading into the town for lunch or coffee.

## **ANCASTER VALLEY**

Famous for its limestone quarries, the village of Ancaster has a pretty nature reserve run by the Lincolnshire Wildlife Trust and they have produced a pdf that you can download showing the location and describing the woodland and grassland species that you might see. The walk includes a birdhide.

## **THE BIRD RESERVE AT RUTLAND WATER**

Just 20 minutes' drive from Easton, the Bird Reserve at Rutland Water is home to Ospreys that come here every summer from Africa. There is so much to learn and see here and it is worth a visit all year round. Birds can be seen overwintering in winter, nesting in the spring and the arrival of the Ospreys is always a significant event at this internationally famous home for over 25,000 wildfowl. There are usually walks and talks on offer so it is worth looking at their website.



# *our local guide*

---

## **CYCLING AND WALKING**



With its gently rolling hills and miles of quiet roads and byways, South West Lincolnshire is the perfect place to explore and walk or cycle. Even the locals haven't been able to explore all the options for walking around the 100 or so villages that encircle Grantham. The Stamford and Rutland areas offer further walks and cycling opportunities.

One of the best guides for walks is a booklet available from Stamford Tourist Information (in the Arts Centre - 27 St Marys Street. Tel: 01780 755 611) which lists 13 varied circular walks in the countryside between Spalding, Bourne, Sleaford and Grantham. The guide gives the length and time for the walk and facilities at each stop. Some of the prettiest walks are nearest to our cottages. Try a 6 mile walk around Ingoldsby Wood or a shorter route around Denton Reservoir stopping in the Welby Arms in Denton.

Nearby Grimsthorpe Castle has a cycle trail that's nearly 10 miles long and the route has been designed with families in mind, avoiding steep inclines and rough terrain wherever possible. The trail is open on their usual open days, and you can hire bikes from them as well.

For families and friends who like to cycle or walk together it is hard to beat Rutland Water which has a 16 mile route that we have all done at some stage with our families! You can hire bikes at Rutland Cycling at Whitwell (Tel: 01780 460705) or walk the peaceful path to the Normanton Church come back through parkland along the dam.



There are plenty of options for serious cycling in our area and our friends and neighbours Neil and Kim run a professional shop in Grantham called Pedal Pushers. Neil has built and serviced bikes for World and Olympic Champions so, if you cycle seriously, a visit to their shop might be a reason to stay with us in itself. Contact Neil at [neil@pedalpushersbikeshop.co.uk](mailto:neil@pedalpushersbikeshop.co.uk)



# *our local guide*

---

## **CATHEDRAL, CASTLES AND COUNTRY HOUSES**

The Easton Estate is surrounded by some of the largest estates in the East Midlands. The figureheads of most great Estates are fine country houses or castles so our guests are spoilt for choice.



The closest house is **Grimsthorpe Castle**. This is truly a hidden gem. It is rarely crowded but the architecture, collections and landscape match some of our most famous houses. Designed by Vanbrugh and visited by Henry VIII, Grimsthorpe Castle is a 15 minute drive from Easton or 10 minutes from The School House in Burton-le-Coggles.

**Belvoir Castle** is about 25 minutes away through some very pretty countryside. The castle is still owned by the Duke of Rutland who is a keen military historian and there are some interesting collections of militaria and a fine portrait by Holbein of Henry VIII. The views from the castle are exceptional and, on the way to the castle, you may see **Harlaxton Manor** an enormous gothic

mansion. Allegedly the owner kept building until he felt he had matched the grandeur of Belvoir. Now owned by the University of Evansville it is open for special events.

To the south, **Burghley House** is a friendly, world famous house. Built by William Cecil, Queen Elizabeth I's closest adviser, it is still lived in by his descendants and boasts a fantastic collection of exciting murals and beautiful works of art. A great place to visit and to combine a trip to Stamford. The Orangery at Burghley is great for lunch.

These houses are still lived in by families but **Belton House** to the north of Grantham was taken over by the National Trust in 1984 complete with many of the contents. It is best known for its role as Rosings Park in *Pride and Prejudice* and has a brilliant adventure playground for children.

Much closer to home (just 3 miles as the crow flies) the National Trust also own Isaac Newton's home, **Woolsthorpe Manor**, which is beautifully interpreted and has a small café and science room in the old stables.

A bit further afield you can visit two of the finest cathedrals in the world. **Lincoln Cathedral** is the best known and is, frankly, awe inspiring. Ruskin described the cathedral (once the tallest building in the world) as "out and out the most precious piece of architecture in the British Isles." Next door in the Castle, you can combine a visit to see Magna Carta in the vaults.

Much less well known is the quality of **Peterborough Cathedral**. When this was owned by the Benedictine monks it was one of the richest in the country and hosted kings and queens as they travelled through the kingdom. The West Front and the 14th century wall paintings are astonishing and only matched by the fan vaulted ceiling at one end and the tomb of Katherine of Aragon.

And finally, and rather humbly, **St. Thomas's Church** in **Burton-le-Coggles** is a simple 12th Century church of great quality with a Grade I listing. It is worth a visit if you are staying at the School House or visiting the pub, The Cholmeley Arms.

# *our local guide*

---

## **CITIES AND MARKET TOWNS**

Most overseas visitors make a trip to the Cotswolds but you might be astonished to discover that our area of South Lincolnshire is built with the same limestone and features the same quality of market towns and stately homes but with half the tourists.

### **STAMFORD**

The first stop for any student of Georgian architecture has to be Stamford (about 15 miles away). The streets are lined with house upon house of interesting features and classical lines. This brings with it boutique shops and good places to eat. Like all old towns, parking can be a challenge and we suggest that if you come into Stamford after Great Casterton that you park in the first council carpark you see - it isn't a long walk and is the best chance of finding a space quickly. A cream tea in the Old Coaching Inn, The George is like having tea at the Ritz for Lincolnshire folk and The George has a carpark at the back for customers. There's also a lovely market every Friday and Saturday.

### **OAKHAM**

Oakham, the County Town of Rutland, is another pretty market town with low attractive buildings centred around a ruined castle and some great local shops, including Cavells for lots of beautiful clothes. Oakham is about 20 minutes away, full of medieval history, scrumptious food & stylish shopping it's a pretty, traditional English market town, bustling with activity. Packed with heritage, there's plenty to see in Oakham which makes it ideal for a day trip. A visit to Oakham isn't complete without buying fresh artisan bread from Hambleton Bakery, who specialise in traditional breads made using long and slow fermentations. The bakery now has several shops or you can visit the Exton Shop & Bakery, just outside Oakham, where it's all made.

### **UPPINGHAM**

Rutland's smaller market town of Uppingham is about 30 minutes away. Enjoy shopping amongst honey-coloured buildings, steeped in history, in a distinctly charming English market town. Uppingham is blessed with a range of speciality shops and traditional retailers, many of whom are still family owned and run.

# *our local guide*

---

## **OUNDLE**

Oundle is a quintessentially English market town with many of its central buildings dating from the seventeenth century. About 35 minutes away, it sits amidst the rolling countryside of Northamptonshire. Oundle has a quaint old marketplace full of bespoke shops, tea rooms and a number of traditional old pubs that serve good food.

## **GRANTHAM**

Grantham is our nearest town and has suffered in recent years from inappropriate development but it still boasts a very fine church (St. Wulfram's), friendly people and a market on Saturdays. The East Coast mainline train stops in the pretty station and is a surprisingly good service at just over one hour from London.

## **LINCOLN**

Our county town with its historic centre and soaring Cathedral is about 50 minutes away by car, and full of old charm. Lincoln offers a rich history combined with independent boutique shopping, great arts and culture and a wealth of places to eat and drink.

## **PETERBOROUGH**

The Cathedral is outstanding and the precinct and market square are unrecognisably good after a major facelift. If you park at the Queensgate centre you can walk through the mall to the cathedral and stop for a quick bite. The tourist information centre is also here so a good place to pick up other ideas.

## **CAMBRIDGE**

A little further afield, about an hour's drive, the University city of Cambridge is one the most beautiful places to visit in our area, if not in the UK as a whole. Be inspired by the many beautiful museums and art galleries. Admire the beautiful architecture and majestic college buildings. Explore quaint passages set around the historic marketplace and colleges, where a unique and relaxing shopping experience can be found.

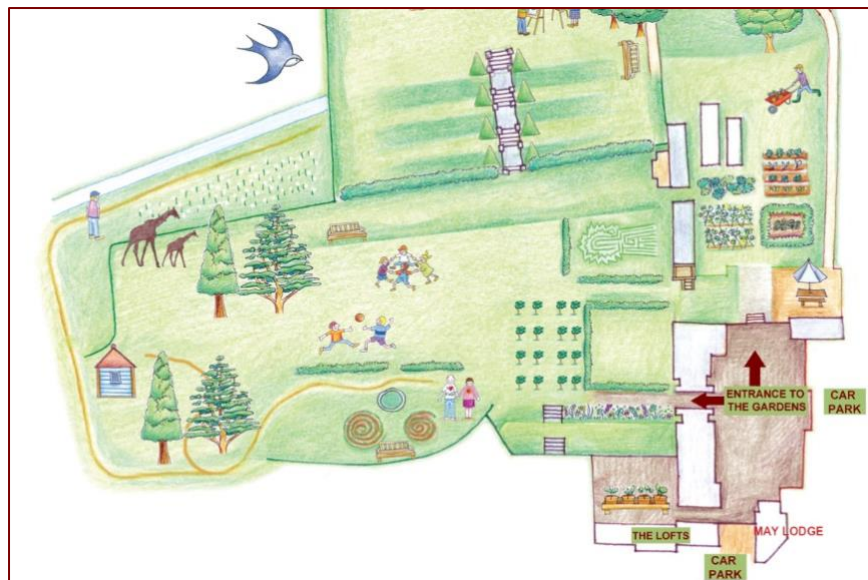


# *easton walled gardens*

Easton Walled Gardens are open to Day Visitors Wednesdays to Sundays and Bank Holiday Mondays (from mid-February to just before Christmas), from 11 am to 4 pm.

You have free access **at all times** (not just Day Visitor open times) to Easton Walled Gardens during your stay. Have a lovely time in them – they really are very beautiful – but try not to disturb others, and we're afraid that this perk is for those staying in Estate Holiday Cottages only, and we ask you not to bring in extra guests without checking with us first.

To get into the Gardens you can go straight from the Sitting Room door and through the gate on the terrace. Otherwise, either go under the Archway or down through the trellis gate to your left (which says Staff Only on it). Please refer to the map in the Cottage for more detail.



**DOGS** Dogs are welcome in Easton Walled Gardens, 10am or after 5pm on open days. Please can you keep them on a lead at all times when in Easton Walled Gardens and make sure you clean up after them.

**ENTRANCE** is free for all Holiday Cottage guests

**GATES** Please leave all gates in the Gardens and around the Estate as you found them.

**THE COURTYARD SHOP** There is an extensive Gift Shop at Easton Walled Gardens, which stocks some of the things found in the Cottage (eg soaps and postcards, as well as lots of other lovely ideas) and it's open on Day Visitor opening days from 10-4, but do let us know if you'd like to visit it at other times and we'll do our best to help.

**THE COFFEE ROOM** in The Courtyard is open whenever the Gardens are open and serves fresh coffee, tea and cake. It's an ideal place to read one of the gardening books on the shelves, or to catch up on some work away from the cottage.

**THE APPLESTORE** When the Gardens are open, The Gatehouse Lodge key will get you free tea and coffee in The Applestore. I'm afraid that this doesn't include the yummy cake, the delicious scones, hot chocolate or anything else – just tea or coffee.

**VOLUNTEERING** If you fancy a bit of volunteer gardening at Easton Walled Gardens for a day, do let us know and we'll find something suitable for you to do. Pop into the Gardens office and speak to Rachel or Angela

welcome in  
but only before

# easton walled gardens

Getting around...

## easton WALLED GARDENS

● Areas with no steps

- 1 The Courtyard
- 2 Velvet border
- 3 Former site of Easton Hall
- 4 White space garden
- 5 Woodland walk
- 6 Cedar meadow
- 7 Giraffe sculpture
- 8 Turf maze
- 9 Peach house foundations
- 10 Bird viewing area
- 11 Sloping path with handrail
- 12 Vine house walk
- 13 Greenhouses & cottage garden
- 14 The pickery
- 15 Alpine bed
- 16 The Estate Office

- 🌿 Information boards
- 🌿 Lookout point

○ Other points of Interest

- 17 Meadow retreat
- 18 Snowdrop bank (Early Spring only)
- 19 Wildflower terraces
- 20 The ornamental bridge
- 21 River Witham
- 22 Long borders
- 23 Rose meadows
- 24 Yew tunnel
- 25 Orchard
- 26 Montague's gate

Easton Holiday Cottages

- 27 The Gatehouse Lodge
- 28 Loft Apartments
- 29 May Lodge

Provides access to lower gardens avoiding steps and terraces



**Boring but important.** All reasonable steps have been taken to ensure your safety but please remember that these gardens are still being developed. Therefore, we ask you to watch your step and keep to paths and lawns. Please ensure children are supervised at all times particularly near the river. Thank you.

**We hope you enjoy your visit.**

Easton, Grantham, Lincolnshire NG33 5AP • Telephone: 01476 530063 • [info@eastonwalledgardens.co.uk](mailto:info@eastonwalledgardens.co.uk) • [www.visiteaston.co.uk](http://www.visiteaston.co.uk)



# maps

Easton is in the south part of Lincolnshire, which is the second biggest county in England.

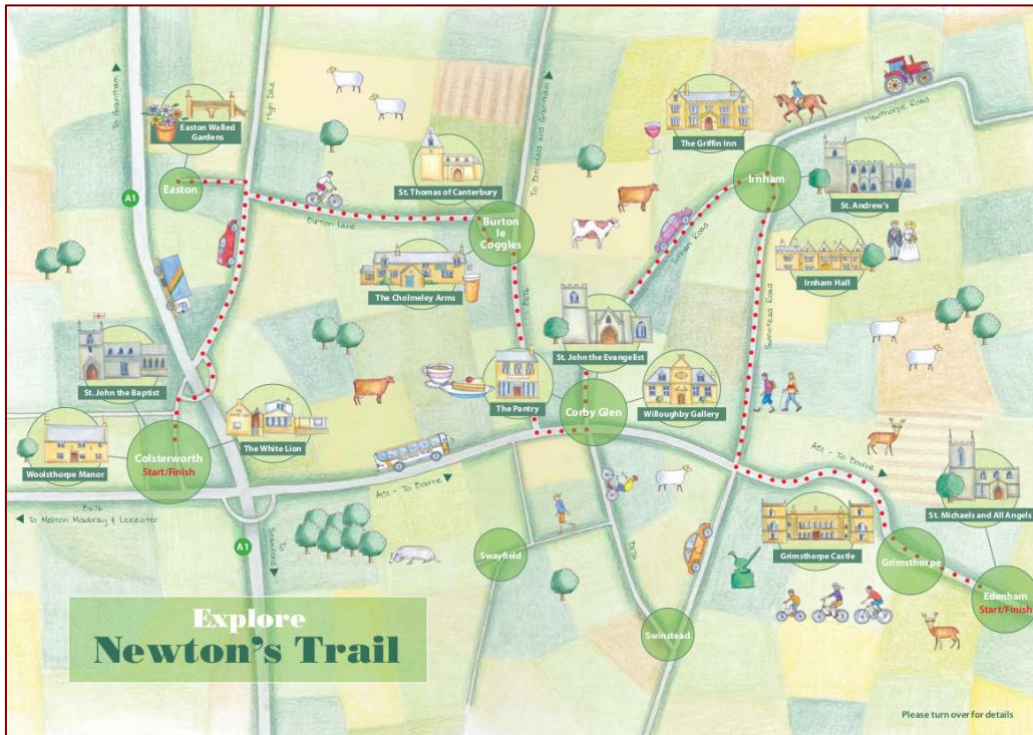




# maps

## NEWTON'S TRAIL

In a hidden corner of an underexplored county, the trail takes in medieval churches, stately homes, gardens and pubs. It's a community of attractions, places to stay, churches to visit and places to eat and drink around Corby Glen and the surrounding villages.



### Explore Newton's Trail

It's easy to explore Newton's Trail on foot, by car or on a bike. The dotted lines on the map mostly follow quiet country lanes that lead you to the places we've highlighted. Details on them all are given below. There's plenty to see and enjoy in this tranquil part of South Lincolnshire.

#### Woolthorpe Manor

Coldesthorpe  
Tel: 01476 860338  
email: woolthorpe@nationaltrust.org.uk  
www.nationaltrust.org.uk/woolthorpe-manor  
Isaac Newton was born here but also returned in 1665-1666 to work on his inspirational and world-changing theories on gravity, light and maths.

#### Easton Walled Gardens

Easton  
Tel: 01476 530063  
www.eastonwalledgardens.co.uk  
12 acres of glorious 400 year old gardens including vegetable, cottage, cutflower gardens, meadows, flower borders and good cake!

#### St. John the Baptist Church

Coldesthorpe  
Tel: 01476 861959  
www.coldesthorpe.org  
This Saxon church is one of the oldest in Lincolnshire, where Isaac Newton was baptised in 1642.

#### St. Thomas of Canterbury

Burton le Coggles  
www.threestonestate.co.uk  
Recently restored Norman grade one listed church with simple atmospheric stone interior and beautiful stained glass windows. Just opposite The Cholmeley Arms.

#### The Cholmeley Arms

Burton le Coggles  
Tel: 01476 550225  
Email: info@cholmeleyarms.co.uk  
Village pub/restaurant/farmshop/letting bedrooms.

#### The White Lion

Coldesthorpe  
Tel: 01476 861466  
www.whitelioncoldesthorpe.co.uk  
The White Lion is a village Public House serving highly acclaimed food. Whether it's a light snack or a full meal there is something for everyone.

#### The Pantry

Corby Glen  
Tel: 01476 550108  
www.thepantrycorbyglen.co.uk  
Award winning coffee shop and Post Office in Corby Glen that also offers a great range of gifts and cards.

#### St. John the Evangelist

Corby Glen  
11th century church with surviving medieval wall painting.

#### The Willoughby Memorial Gallery

Corby Glen  
Tel: 01476 550380  
www.willoughbygallery.com  
An art gallery hosting exhibitions by local area artists and groups in a beautiful 17th century former school building.

#### Irtham Hall

Irtham  
Tel: 01476 552027 (office hours)  
www.irthamhallneets.co.uk  
The stunning Irtham Hall is the private home of the Bertson Jones family and boasts beautiful grounds and walled garden which are now a popular wedding venue.

#### The Griffin Inn

Irtham  
Tel: 01476 550201  
www.thegriffinirtham.co.uk  
Award winning, 4 Star, secluded 300 year old country inn open for food Wednesday to Sunday serving dishes created with passion & with stunning 4 star luxury B&B.

#### St. Andrew's Church

Irtham  
www.irtham.org  
One of the most beautiful of South Lincolnshire's medieval churches, St. Andrew's was where the world famous Luttrell Psalter (British Library) began.

#### Grimsthorpe Castle

Grimsthorpe  
Tel: 01778 591205  
www.grimsthorpe.co.uk  
Grimsthorpe is a historic house, park & garden, open in the summer for adults and children to enjoy the countryside, nature and history.

#### St. Michael's and All Angels

Edenham  
Tel: 01778 591358  
www.edenhamregionalhouse.org  
Edenham Church is a Saxon foundation with outstanding architecture and art from every century since then. It is open daily in daylight. The adjacent Vicarage functions as small retreat house and conference centre.

### Newton's Trail

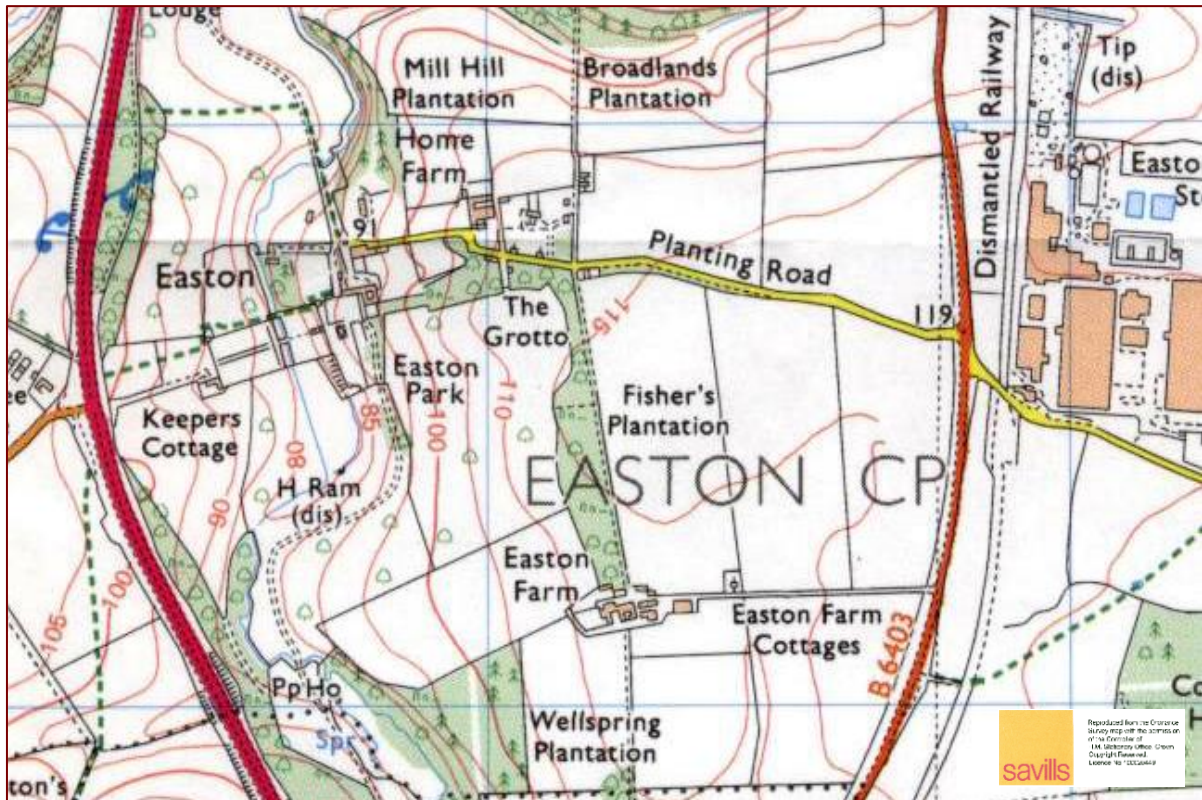
Have fun exploring!

Any	Disabled access
Refreshments	Accommodation
Liquor license	Ticket required
Car park	Liquor license
Open all year round	Car park

# maps

## FOOTPATHS AROUND EASTON

The green dashed lines denote public rights of way, and it is requested that, if walking on the Estate, you stick to these and keep your dog under close control.



# *emergency information*

IN THE CASE OF AN EMERGENCY, FOLLOW THE DIRECTION OF LOCAL OFFICIALS.



## Safety Card



### Emergency phone numbers

Medical 999

Fire 999

Police 999



### Location of fire extinguisher

In the kitchen under the sink and in the bathroom cupboard



### Emergency exit instructions

Through either ground floor doors, or through the stair window



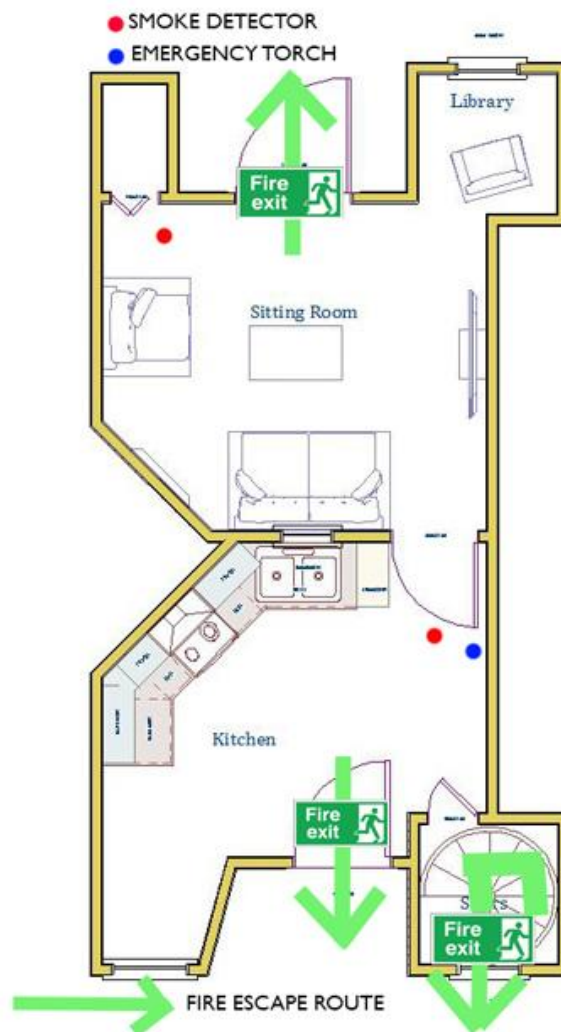
# *emergency information*

IN THE CASE OF AN EMERGENCY, FOLLOW THE DIRECTION OF LOCAL OFFICIALS.



## Safety Card

### Evacuation Plan - Downstairs



# *emergency information*

IN THE CASE OF AN EMERGENCY, FOLLOW THE DIRECTION OF LOCAL OFFICIALS.



## Safety Card

### Evacuation Plan - Upstairs



# *emergency information*

---

## **FIRE PREVENTION AND SAFETY**

**PLEASE NOTE THE LOCATION OF THE FIRE EXTINGUISHER AND FIRE BLANKET**, which are in the cupboard under the sink and in the bathroom cupboard, and can be used on all types of fires.

Only use the equipment provided if the fire is containable and you are confident that you can use it safely – **DO NOT PUT YOURSELF OR OTHERS AT RISK**

In the event of a fire please ensure that everyone evacuates the premises and call **999** for the emergency services.

Ask the operator for **FIRE**

Give the Fire Brigade the address:  
The Gatehouse Lodge, The Square  
Easton Walled Gardens,  
Grantham  
Lincolnshire  
NG33 5AP

Grid Reference: SK 928 2678

What3Words: magnetic.specifies.enable

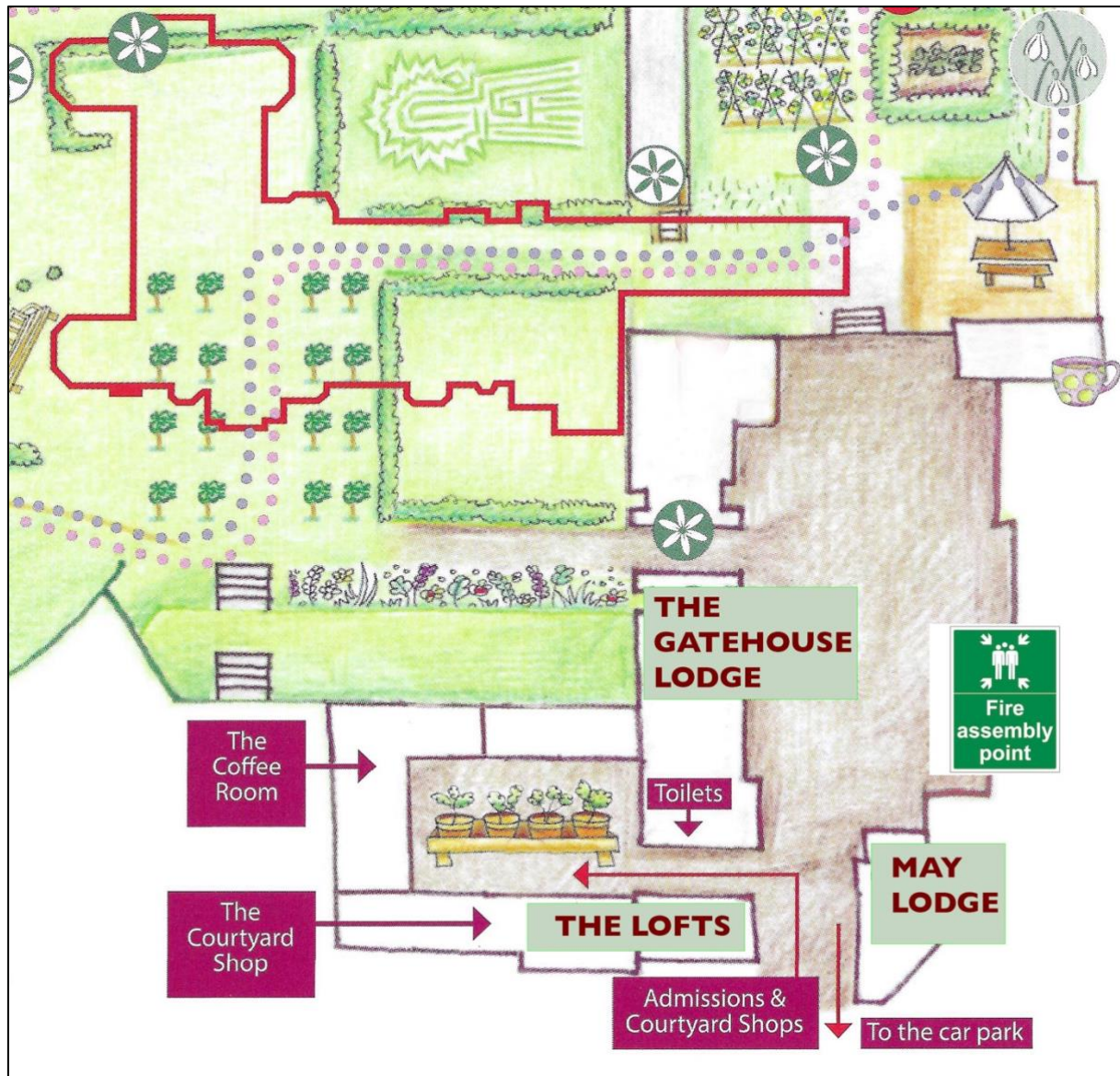
**DO NOT HANG UP UNTIL THE ADDRESS HAS BEEN REPEATED BY THE FIRE BRIGADE**

- Please ensure all doors are closed before you go to bed.
- Please note that this is a non-smoking property.
- Please switch off any hazardous electrical devices, particularly hair driers and irons when you're not present.
- Please do not leave any naked flames unattended and make sure that the woodburner is safe and that all candles are extinguished before you go to bed, or leave The Gatehouse Lodge.
- The Fire Blanket and Extinguisher are in the cupboard under the sink, and in the bathroom cupboard.
- In the event of a fire, and after you have called the Fire Brigade, please let the Estate know on **01476 550 227** during office hours.
- In the event of a false activation of the sprinkler, press the STOP button on the black box under the sink in the kitchen.



# *emergency information*

In the event of a fire, and after you've made sure everyone has left the cottage, please assemble at the Fire Assembly Point in the Square.



# *emergency information*

---

## **EMERGENCY PHONE NUMBERS**

For emergency services please immediately call **999**. Do not delay if you feel an emergency situation has arisen.

## **A&E**

The nearest 24 Hour Accident and Emergency is at Peterborough City Hospital (22.3 miles)  
Bretton Gate, Bretton, Peterborough, PE3 9GZ **01733 678000**

## **DOCTOR**

The nearest Doctor's Surgery is The Surgery, Back Lane, Colsterworth, Grantham, Lincolnshire, NG33 5NJ  
(just over the A1, via a bridge). Tel: **01476 860243**  
Out of Hours you should try NHS Direct – call **111**

## **HOSPITAL**

Grantham Hospital – 24 hour urgent treatment centre (8.5 miles)  
101 Manthorpe Road, Grantham, NG31 8DG **01476 565232**

## **PHARMACY**

The nearest pharmacy is in Grantham, about 10 miles away.

## **VET**

The nearest Vet is Avenue Veterinary Surgery in Grantham (10 Miles) - 35 Avenue Rd, Grantham NG31 6TJ.  
**01476 564490**

# *emergency information*

---

## **LOCATION OF FIRE EXTINGUISHER**

This can be found in the Kitchen under the sink and can be used on all types of fires. Please let us know if it gets used or set off and we can get it re-filled. There is also an extinguisher in the bathroom cupboard.

## **SMOKE & CARBON MONOXIDE DETECTORS**

The Gatehouse Lodge is fitted with Smoke Alarms and CO detectors. Please don't press anything unless you really need to! Let us know if there are any problems with them.

## **EMERGENCY TORCHES**

In case of a power cut, or other emergency, the torches which you'll find plugged in (one on each floor) will come on automatically to help you find your way about (or out, in the event of a fire). Please make sure that when not in use they are always kept in their sockets, where they will charge and be ready in the unlikely event of being needed in an emergency.

## **FIRE ESCAPE**

In the event of a fire please follow the Fire Procedure (a copy is provided in the folder and in the Kitchen). The Lodge has a sprinkler system which will come on in the event of a fire. The window on the stairs opens outwards and is the designated fire escape

**SPRINKLER** The Kitchen is fitted with a sprinkler, which is heat (rather than smoke) activated. Should this go off accidentally, open the cupboard under the sink and press **STOP** on the black box.

# *instruction manuals*

---

You should find all the instruction manuals you need in the folder, but please let us know if anything's missing.

